

INSTALLATION INSTRUCTIONS

DESCRIPTION: Fender Eliminator Kit
 PART NUMBER: B7N-F16E0-V0
 MODEL: 2021+ MT09



⚠ WARNING

Please read and understand these instructions completely before installation to avoid possible injury, or damage to the accessory or vehicle.

WARRANTY INFORMATION:

In the United States, see your Yamaha dealer for a copy of the Yamaha Genuine Parts and Accessories Limited Warranty.

NOTICE:

Installation of this kit requires a torque wrench and should be performed by an authorized Yamaha dealer or a qualified mechanic.

DEALER OR INSTALLER:

These instructions contain important information for future reference and *must* be given to the customer.

PARTS LIST:

No.	Part Number	Description	Qty
--	B7N-F16E0-V0	Fender Eliminator Kit	--
①	*	Left Hand Main Bracket	1
②	*	Right Hand Main Bracket	1
③	*	Turn Signal Mount	1
④	*	LED Mount	1
⑤	*	Reflector Holder	1
⑥	*	Mud Guard	1
⑦	*	M6x25 Flat Hex Head Screw	2
⑧	*	M6x35 Button Head Screw	4
⑨	*	M6 Flat Washer	6
⑩	*	M6 Nylon Locking Nut	4
⑪	*	M6x20 Button Head Screw	2
⑫	*	Cable Tie	3
⑬	*	Rubber Grommet	1
⑭	B4J-F151B-00	Cap	1
⑮	B7N-H2309-V0	Wire Harness	1
⑯	BN6-H4560-V0	License Light Assy.	1

* Part supplied with kit only and not available separately.

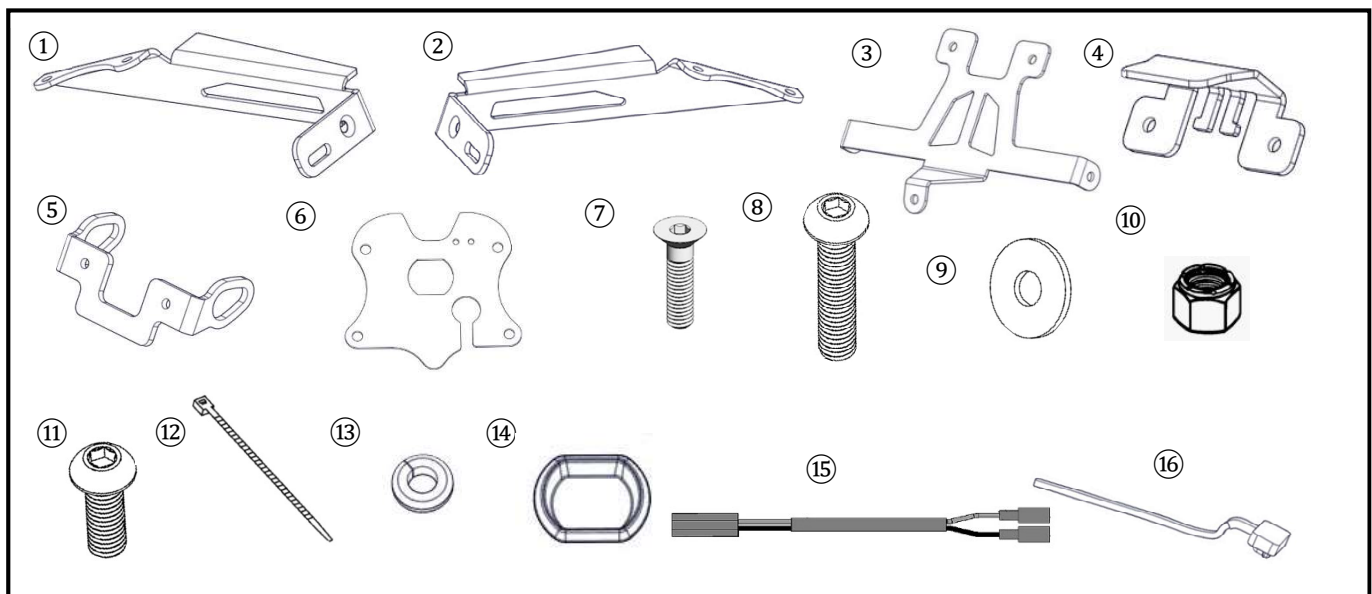


Fig. 1

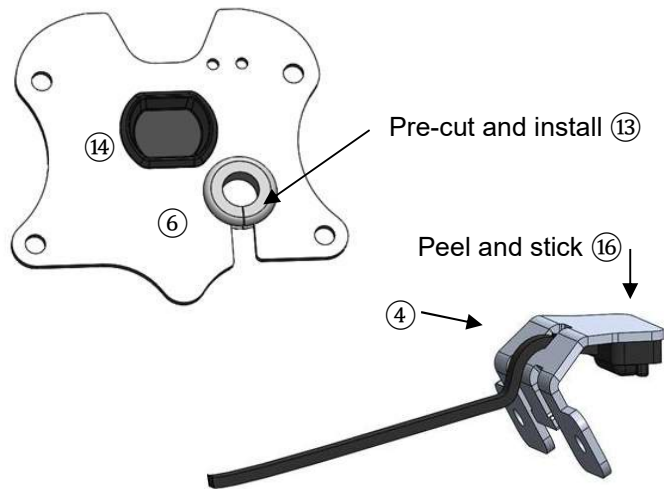


Fig. 2

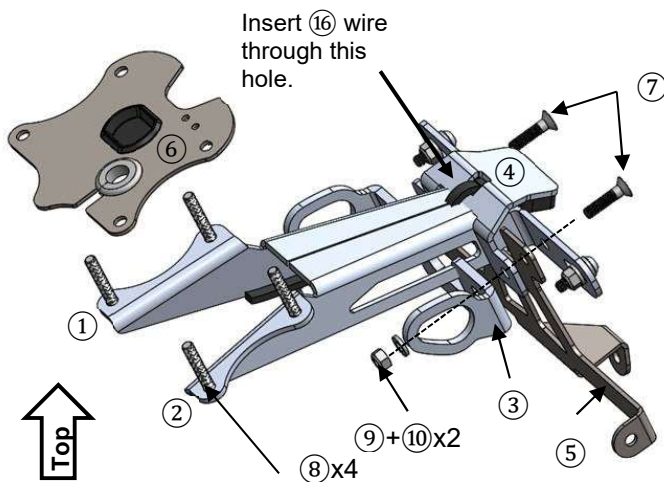


Fig. 3



PREPARATION:

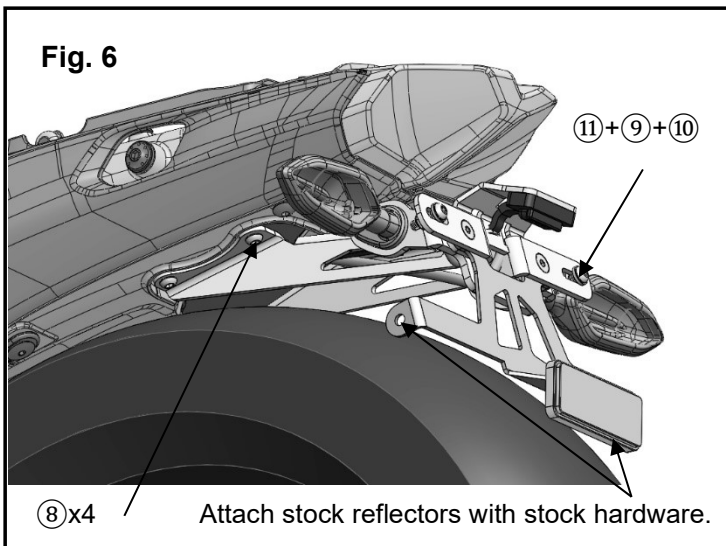
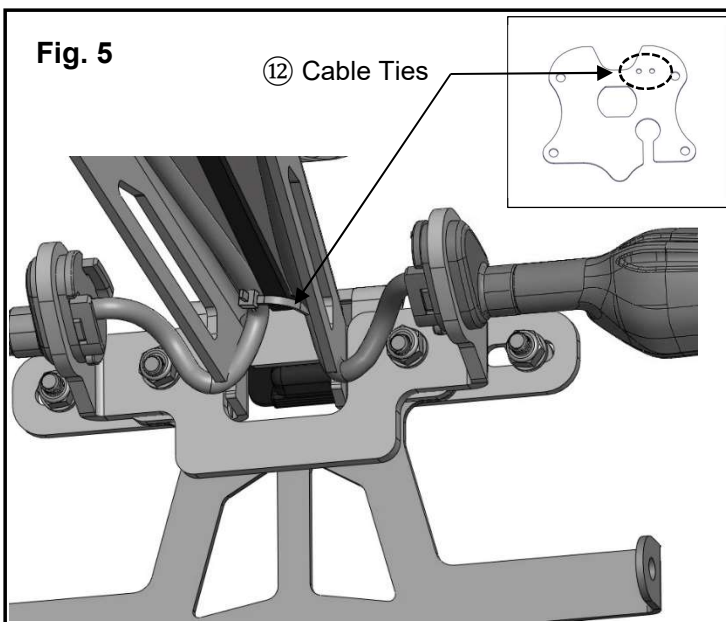
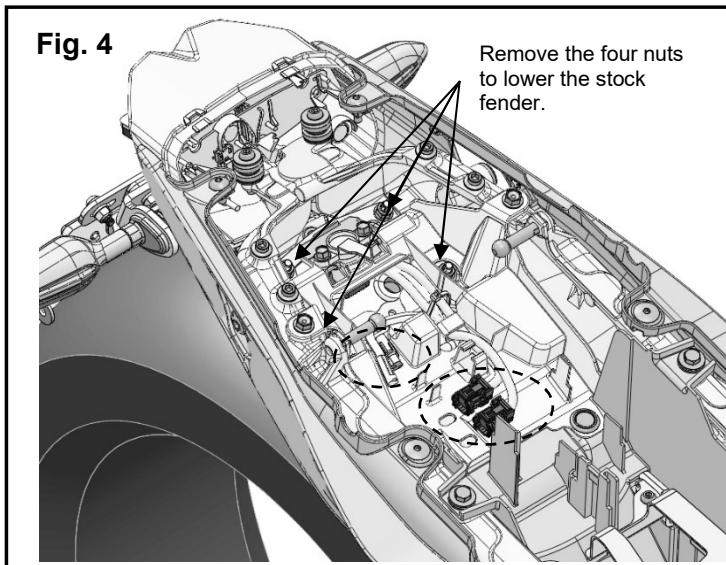
- Stand the motorcycle on a secure level surface.
- Clean the mounting surfaces before beginning installation.
- Disconnect negative battery lead.
- **Notice:** Recommend that Thread Locking Fluid is used on all hardware that does not attach with a nylon locking nut.

INSTALLATION: Fender Eliminator Assembly

1. Pre-cut the ⑬ Rubber Grommet for wire fitment later in the installation.
2. Install the ⑬ Rubber Grommet and ⑭ Cap into the ⑥ Mudguard by pressing them into place. Align the cut with the opening. (Fig. 1)
3. Insert the ⑯ License Light Assembly wire through the access hole in the ④ LED Mount Bracket. Peel the adhesive backing from the ⑯ License Light Assembly and place it on the ④ LED Mount Bracket. The wire will fit under and in between the ① and ② Left and Right Main Brackets. (Fig. 1 and 2)
4. On a work bench, insert both ⑦ M6x25 Flat Hex Head Screw into the ① and ② Left and Right Main Brackets. These will act as alignment pins as you stack the rest of the brackets and mounts. (Fig. 2)
5. Place the ① and ② left and Right Main Bracket side by side. Then place the ⑤ Reflector Bracket over the screws. (Fig. 2)
6. Next, place the ④ LED Mount over the screws and on top of the ⑤ Reflector Bracket. Route the ⑯ License Light Assembly wire in between and inside the ① and ② Left and Right Main Brackets. (Fig. 2)
7. Place the ③ Turn Signal Mount over the screws and the rest of the brackets. Place one ⑨ M6 Flat Washer on the end of each screw and thread on one ⑩ M6 Nylon Locking Nut on both ⑦ M6x25 Flat Hex Head Screws. (Fig. 2)
8. Tighten the hardware just enough to allow for adjustment.
9. Align the brackets so they look even and level. Torque the hardware to 7Nm (0.7 m·kg or 5.1 lb·ft)

INSTALLATION: Motorcycle Disassembly:

1. Remove the seat as per the owner's manual.
2. Remove the latch bracket to access the nuts that hold the stock fender to the tail section. (Fig. 3)
3. Disconnect the blinker wires and the tag light wire. Mark each wire for location. They will be reused. (The black plug is left and white is right.) (Fig. 4)
4. Remove the four flanged nuts and one plastic rivet holding the stock fender to the motorcycle. (Press the rivet out from inside the tail section) The flanged nuts will be reused. (Fig. 4)



5. This will allow the rear fender to drop from the rear frame section. Gently pull the wires from the seat section as you remove the rear fender. (Fig. 4)
6. The stock rear fender will need to be disassembled and the following parts will need to be saved.
 - a. Both blinkers and harnesses.
 - b. Three reflectors and hardware.
7. The rest of the stock fender is not reused.

INSTALLATION: Fender Eliminator Kit

1. Attach the blinkers and three reflectors to the Fender Eliminator Kit with the stock hardware. (Fig. 5 and 6)
2. Use 12 Cable Ties to secure the wire harnesses to the 4 LED Mount Bracket. (Fig. 5)
3. Align the 6 Mudguard over the assembled Fender Eliminator and insert the blinker wires and the 16 License Light Assembly wire through the 13 Rubber Grommet. Secure the wires with a 12 Cable Tie to the 6 Mudguard. (Fig. 5 insert)
4. Insert the wires into the tail section. (Fig. 3)
5. Attach the Fender Eliminator Assembly to the underside of the tail section with four 8 M6x35 Button Head Screws and the four stock flanged nuts. Torque to 7Nm (0.7 m-kg or 5.1 lb-ft) (Fig. 6)
6. In the tail section, attach the 15 Wire harness to the 16 License Light Assembly bullet connectors and the other end to the stock wire harness. (Fig. 3)
 - a. White to white
 - b. Black to black
7. Connect the blinker wires to the stock wiring harness. (Fig. 3)
8. Reconnect the battery and test operation.
9. Reinstall the latch bracket with the stock bolts and torque to 7Nm (0.7 m-kg or 5.2 lb-ft) (fig. 3)
10. Reattach the seat to the tail section as per the owner's manual.
11. Attach the license plate with both 11 M6x20 Button Head Screws, four 9 M6 Flat Washers and both 10 M6 Nylon Locking Nuts.

MAINTENANCE:

Periodically, check torque on all hardware. If loose hardware is found, re-torque to specification.

CARE AND CLEANING:

Clean painted metal parts with a clean soft cloth and mild soap and water solution. Rinse and dry.

CUSTOMER SERVICE:

For further information see your Yamaha dealer.

ESTIMATED TIME TO INSTALL: 1.0 HRS.